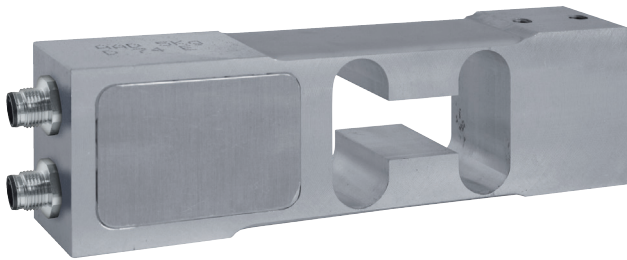
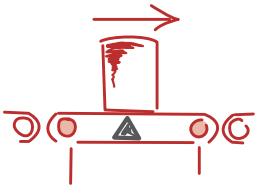


AAD-C

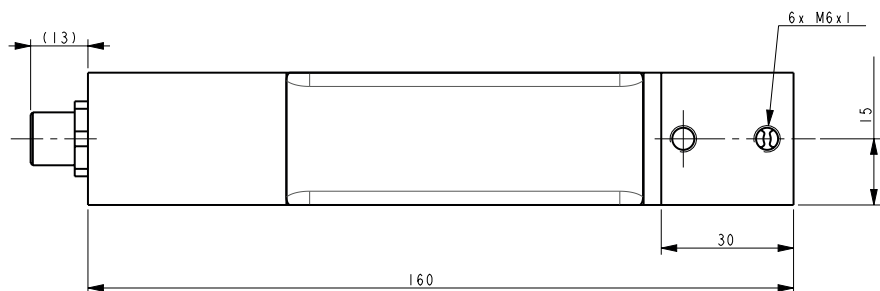
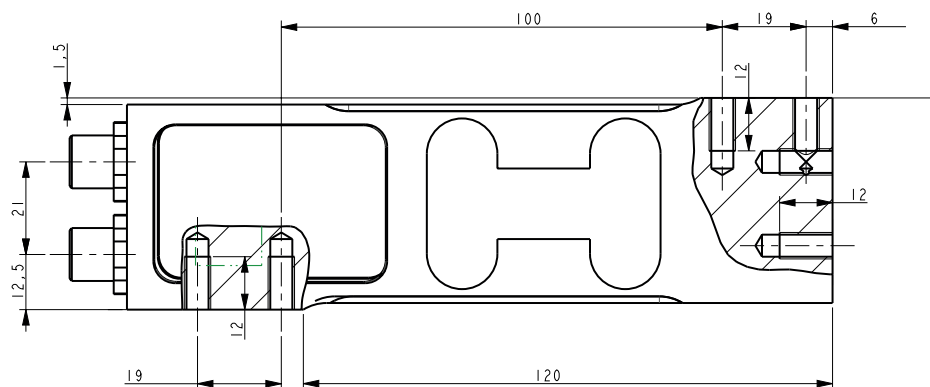
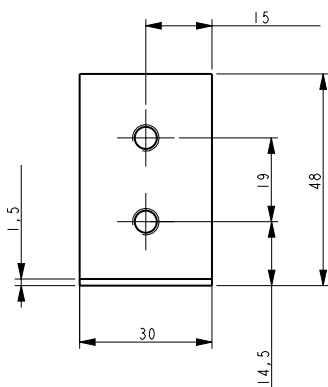
5 kg ... 75 kg



- Digital single point load cell
- Aluminum construction, IP65 protection level
- High accuracy load cell with compact design
- Function: High speed checkweigher, grading
- 2 digital inputs and 4 outputs
- Port RS485 Modbus and port CANOpen
- Certification OIML R76, R51 (15kg...75kg)



CANopen  Modbus



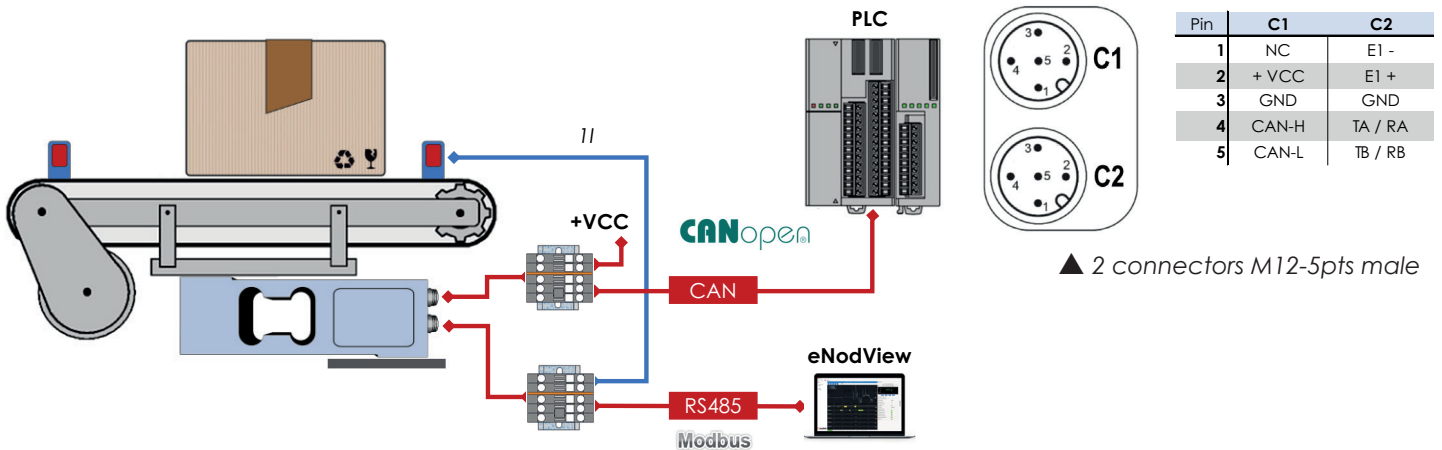
All dimensions in mm. Dimensions and specifications do not constitute any liability whatsoever. Technical drawings are available on request.

Presentation

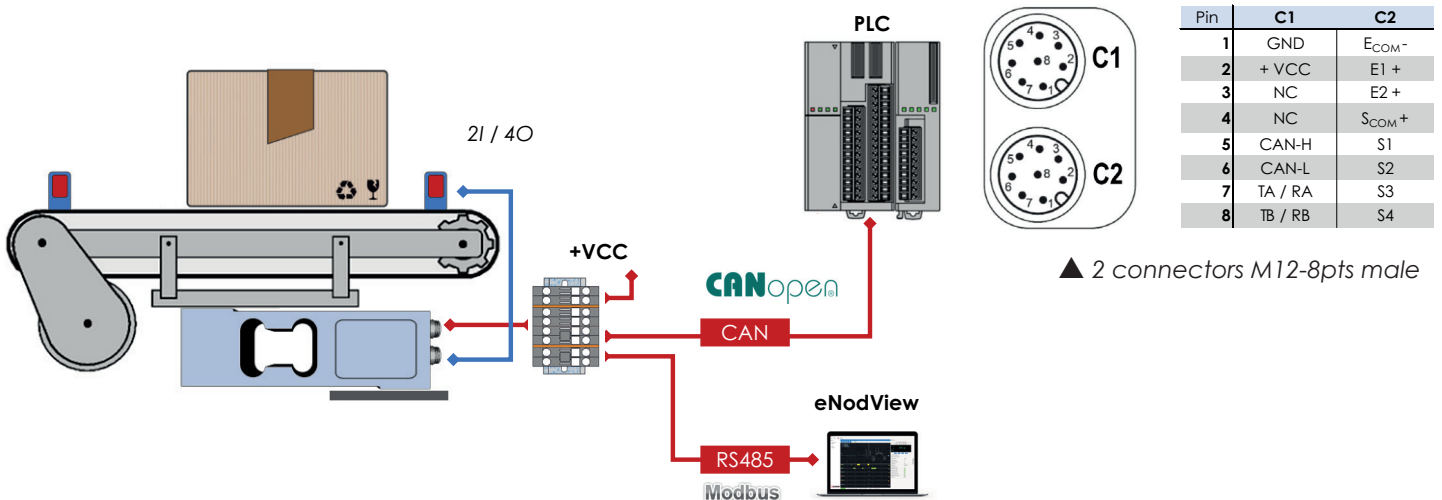
- **High performance digital load cell**
 - Optimized design for use in high accuracy checkweighers and packaging machines
 - Built-in electronics with 24-bits A/D converter allowing a resolution up to 500,000 points
 - Digital filters dedicated to the elimination of vibrations and mechanical disturbances
 - Software for dynamic checkweighing, grading, or high-speed measurement transmission
- **In-built Inputs/Outputs for process control**
 - 2 digital inputs and 4 outputs fully configurable (depending on wiring version)
- **PLC connectivity**
 - 1 PLC link RS485 MODBUS-RTU or CANopen

Interfaces diagram, serial versions

11A wiring: CAN, RS485, 1 digital Input



22A wiring: CAN, RS485, 2I / 4O



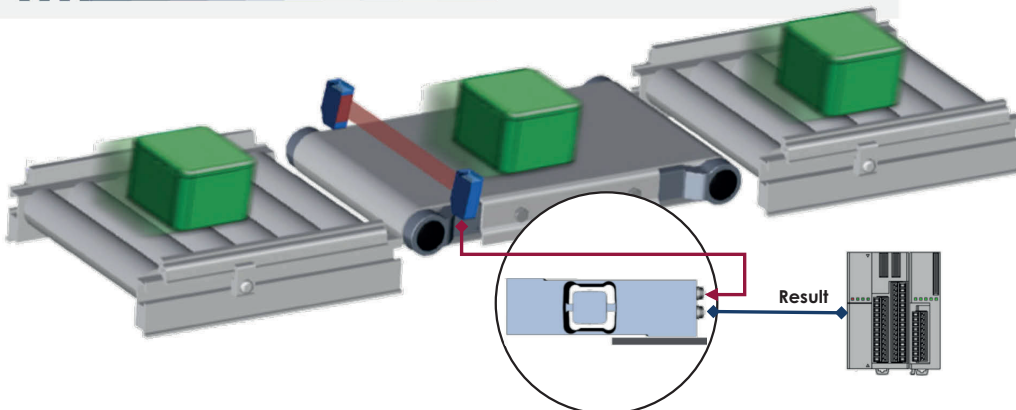
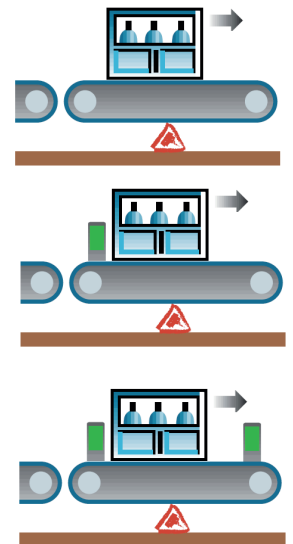
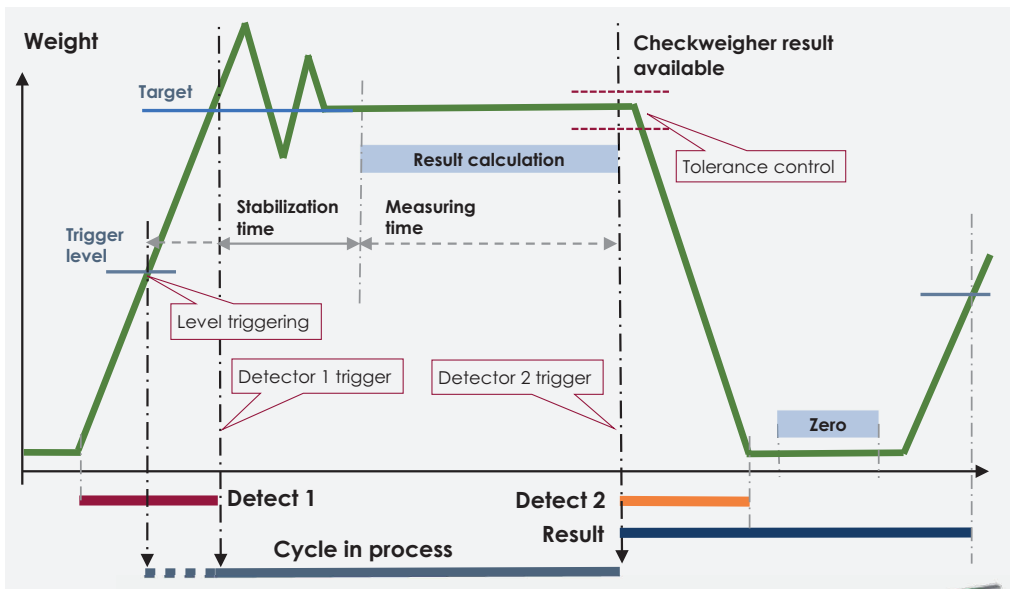
General functionalities

- **Calibration**
 - Factory calibration: 500 000 pts at rated capacity
 - Measurement scaling
 - Digital identification: Mark, Model, serial N°, capacity, unit, user data
- **Signal processing**
 - High speed measurement rat: Internal up to 1600Hz, transmission up to 800 Hz
 - Configurable digital Low-pass filter
 - Configurable digital Notch filter
- **Functions**
 - Zero, tare, zero tracking, Stability control

Checkweighing functionalities

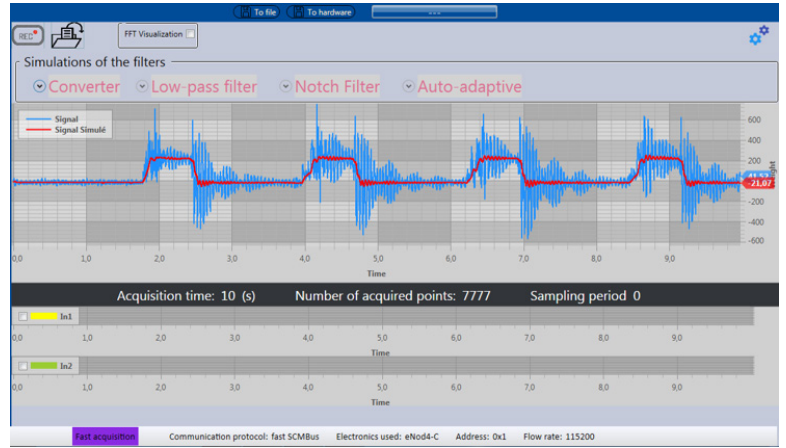
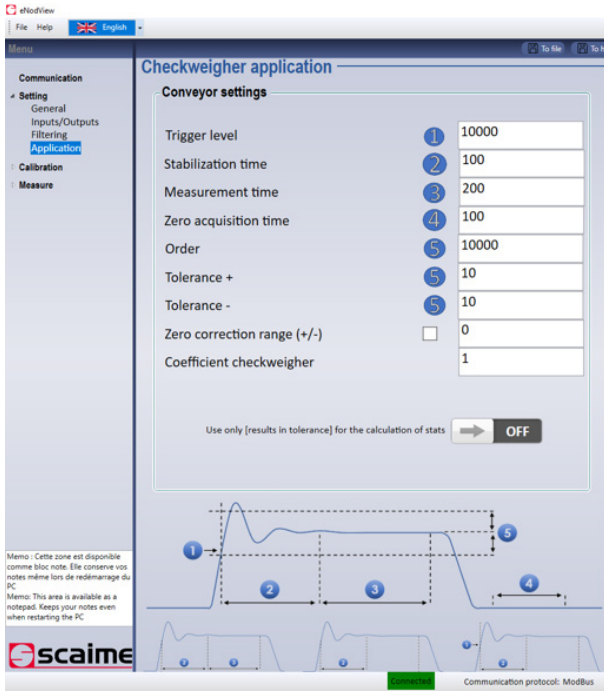
- **Control of dynamic weighing process:**
 - Operating mode dedicated to High-speed dynamic weighing (sorting, checkweighing...)
 - Automatic calculation of weight value passing on the load receiver
 - Weight level or external triggering with 1 or 2 digital inputs
 - Dynamic Zero functions
 - Statistical functions

Example of dynamic weighing on conveyor



eNodView PC Freeware

- Setting, user calibration and control
- Measurements, results and I/O display
- Digital filters optimization by FFT analysis and filter effect simulation



▲ Simulation of digital filtering effect with eNodView software

Ordering references

Application software	
-C	Checkweigher
-D	Batch dosing, Filling
Rated capacity	
-005	5 kg
-015	15 kg
-030	30 kg
-075	75 kg
Legal for trade	
-000	No OIML approved ⁽¹⁾
-ML3	OIML approved 3000d ⁽¹⁾
PLC connectivity	
-SC	CANOpen / RS485 Modbus-RTU
Wiring	
-11A	2xM12-5p, CAN wiring
-22A	2xM12-8p, CAN wiring

(1) 000: Capacity 5kg (005)

AAAD						-000
------	--	--	--	--	--	------

Specifications

METROLOGICAL					
Rated capacity (Cn)	5	15	30	75	kg
Combined error	±0.019				%Cn
Temp. effect on zero	±0.0011				%Cn/°C
Temp. effect on sensitivity	±0.0016				%Cn/°C
Creep error (30 min.)	±0.028				%Cn
Maximum platform size	500x400		600x400		mm
Serial version - n (OIML R76)	No	3000			d
Serial version - e (OIML R76)	No	1	2	5	g
Nominal temperature range	-10 ... +40				°C
Service temperature range	-20 ... +75				°C
ELECTRICAL					
Power supply	10 ... 28 VDC / 0.6 W				
A/D converter	24-bits / 4kHz				
Rated sensitivity at Cn	500 000				pts
Zero balance	±300				pts
Internal conversion rate	6 ... 1 600				Conv./s
GENERAL					
Safe load limit	150				%Cn
Ultimate overload	200				%Cn
Tightening torque	15		17		Nm
Protection level	IP65				EN60529
Material	Aluminum				
Load cell body	Nickel-plated brass				
connector					
Connection	M12 male - 5 / 8 pts				
Fixing (screw, quality, penetration)	M6x1, Cl A4-80, 6 min - 10 max				
Net weight	0.5				kg
DIGITAL I/OS					
	NB				
Digital inputs	2	Class 3: 11 ... 30 VDC / 12.6 mA			
Digital outputs (static relays)	4	53VDC / 37VAC max. / 400 mA max.			
COMMUNICATION					
1 RS485	Half Duplex, 9 600 ... 115 200				
- Protocols	Modbus-RTU				
CANbus output / CANopen®	CAN 2.0A / 10 kbps ... 1 Mbps				
- Protocols	CANOpen, LSS v3.0				
Max. update frequency of data (measurement) on the bus	CAN				RS485
	800/s				200/s

Accessoires

Connection cables	2 m / 5 m - M12 5 / 8 poles
Converter	RS485 / USB