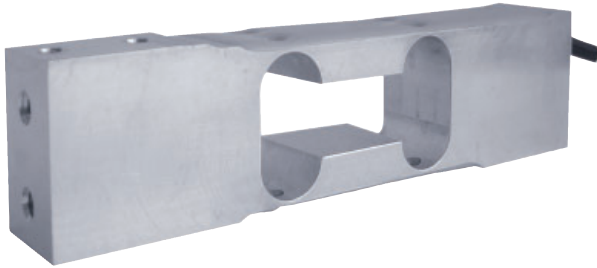
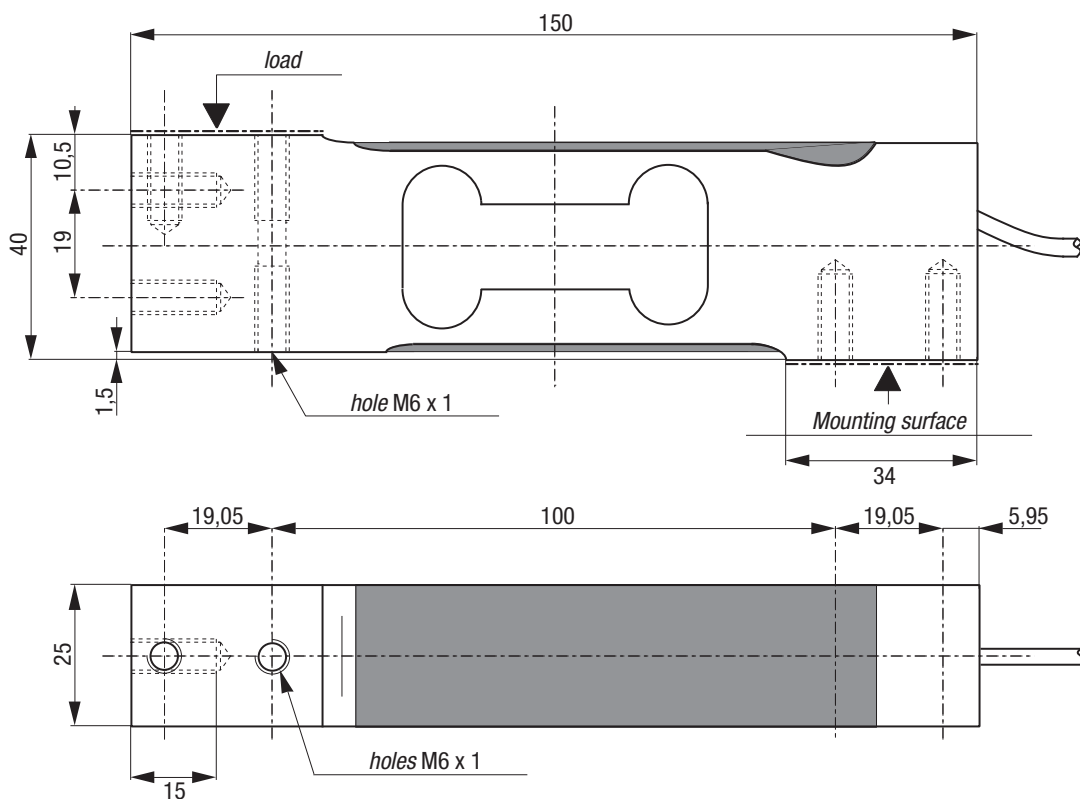


AG

2.5 kg



- Aluminum construction, protection class IP65
- 2 000 d OIML R60 approved
- Off-centered load compensated
- Ideal for low capacity scales and force measurement
- Available with 1/4" - 20 UNC tapped holes : on request



All dimensions in mm. Dimensions and specifications do not constitute any liability whatsoever. Technical drawings are available on request.

Wiring

+ excit.	+ signal	- signal	- excit.	+ sense	- sense
brown	yellow	white	green	grey	pink



Specifications

METROLOGICAL		C2 3e
Rated capacity (Cn)	2.5	kg
Combined error	±0.025	%Cn
Temperature effect on zero	±0.007	%Cn/°C
Temperature effect on sensitivity	±0.0014	%Cn/°C
Creep error (30 min.)	±0.025	%Cn
Maximum platform size	200 x 200	mm
LEGAL METROLOGY OIML R60		
Accuracy class	C2	
Maximum capacity (E _{max})	3.125	kg
Max. number of LC intervals (n _{max})	2 000	d OIML
Minimum verification interval (v _{min})	1	g
Z=E _{max} /(2xDR)	2 000	
ELECTRICAL		
Nominal range of excitation voltage	1 ... 15	V
Rated output at Cn	2 ±10 %	mV/V
Zero balance	±10	%Cn
Input/output resistance	410 ±15 / 350 ±5	Ω
Insulation resistance	2 000	MΩ/50V
GENERAL		
Compensated temperature range	-10 ... +40	°C
Service temperature range	-20 ... +60	°C
Safe load limit	150	%E _{max}
Ultimate overload	200	%E _{max}
Tightening torque	6	Nm
Protection class	IP65	EN 60529
Material		
Measuring body	Aluminum	
Cable gland	-	
Cable sheath	PVC	
Cable length	3	m
Net weight	200	g

Options

ATEX 2014/34/EU, IECEx

Ⓢ II 1 G/D, Ex ia IIC T6 Ga, Ex ia IIIC T80°C Da, IP6X, -20°C < Ta < +60°C (zone 0/20)

Ⓢ II 1 D, Ex ta IIIC T125°C Da, IP6X, -20°C < Ta < +60°C (zone 20)

Ⓢ II 3 G, Ex nA IIC T6 Gc, -20°C < Ta < +60°C (zone 2)

Accessoires

