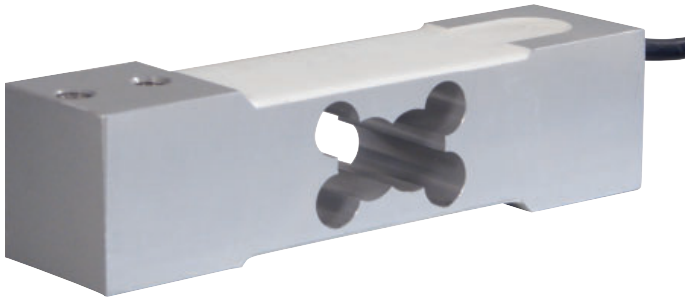
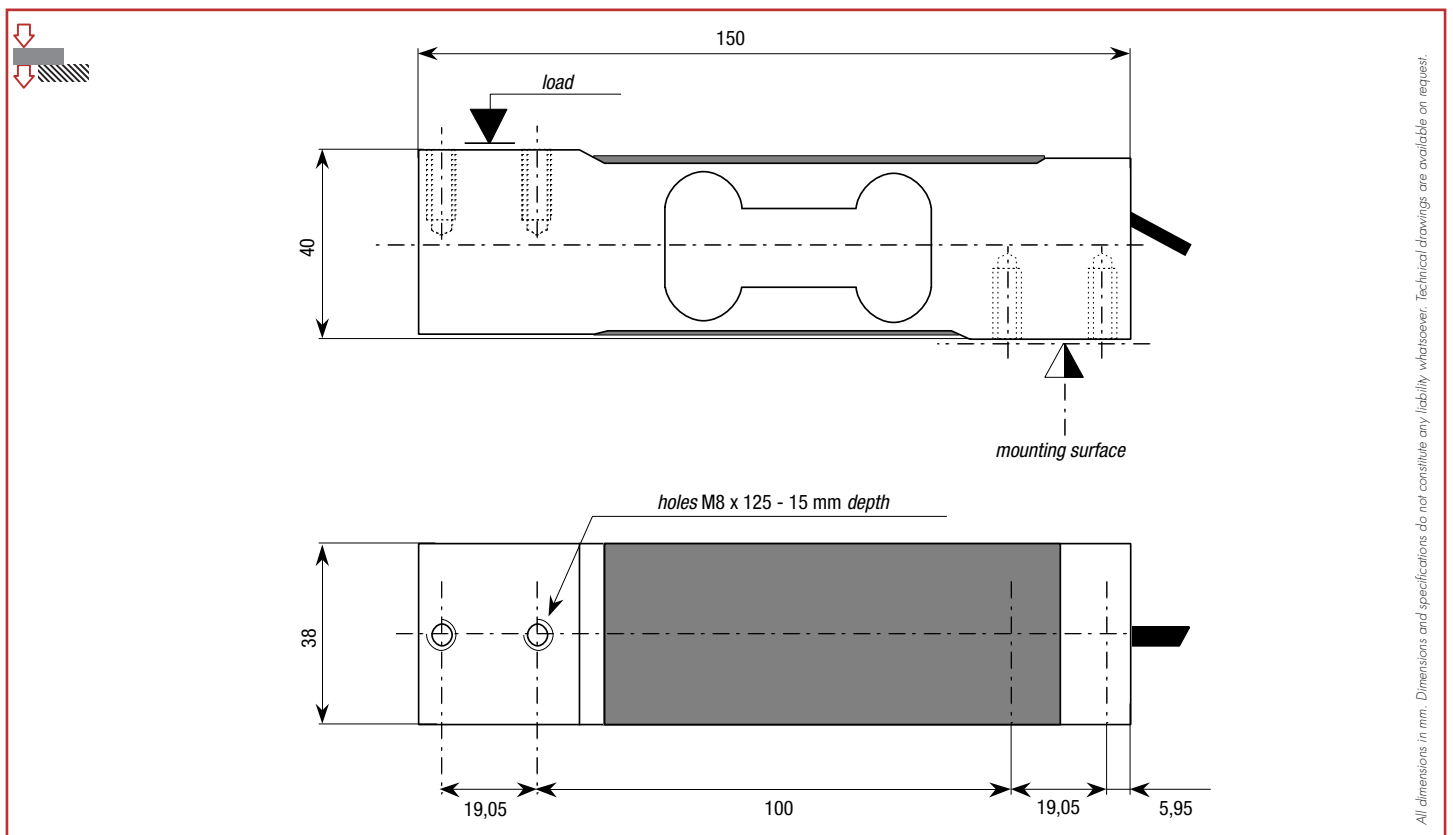


# AH

## 50 kg ... 200 kg



- Aluminum construction, protection class IP65
- 6 000 d OIML R60 approved
- Off-centered load compensated up to 500 x 500 mm
- Low profile design



### Wiring

+ excit.	+ signal	- signal	- excit.	+ sense	- sense
brown	yellow	white	green	grey	pink



## Specifications

METROLOGICAL	C3 10e	C6 10e	
Rated capacity (Cn)	50, 100, 200	50, 100, 200	kg
Combined error	±0.017	±0.008	%Cn
Temperature effect on zero	±0.0014	±0.0014	%Cn/°C
Temperature effect on sensitivity	±0.0014	±0.0007	%Cn/°C
Creep error (30 min.)	±0.025	±0.012	%Cn
Maximum platform size	500 x 500	500 x 500	mm
LEGAL METROLOGY OIML R60			
Accuracy class	C3	C6	
Maximum capacity (E <sub>max</sub> )	50, 100, 200	50, 100, 200	kg
Max. number of LC intervals (n <sub>max</sub> )	3 000	6 000	d OIML
Minimum verification interval (v <sub>min</sub> )	5, 10, 20	5, 10, 20	g
Z=E <sub>max</sub> /(2xDR)	3 000	6 000	
ELECTRICAL			
Nominal range of excitation voltage	1 ... 15		V
Rated output at Cn	2 ±10 %		mV/V
Zero balance	±10		%Cn
Input/output resistance	410 ±20 / 350 ±5		Ω
Insulation resistance	1 000		MΩ/50V
GENERAL			
Compensated temperature range	-10 ... +40		°C
Service temperature range	-20 ... +60		°C
Safe load limit	150		%E <sub>max</sub>
Ultimate overload	200		%E <sub>max</sub>
Tightening torque	15		Nm
Protection class	IP65		EN 60529
Material			
Measuring body	Aluminum		
Cable sheath	PVC		
Cable length	3		m
Net weight	600		g

## Options

ATEX 2014/34/EU, IECEx

Ⓢ II 1 G/D, Ex ia IIC T6 Ga, Ex ia IIIC T80°C Da, IP6X, -20°C < Ta < +60°C (zone 0/20)

Ⓢ II 1 D, Ex ta IIIC T125°C Da, IP6X, -20°C < Ta < +60°C (zone 20)

Ⓢ II 3 G, Ex nA IIC T6 Gc, -20°C < Ta < +60°C (zone 2)

## Accessories

