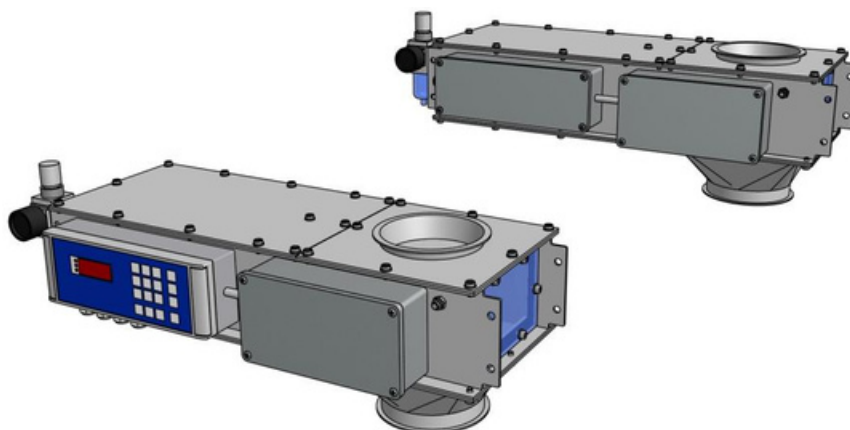




BATCH CONTROLLER BC3

Quantity measurement and dosage of solid products



Characteristics

- Pneumatic control of opening and closing of the product inlet valve.
- Continuous measurement and calculation of the total quantity
- Gravimetric dosing with pre-selection of the desired quantity.
- Extremely compact dimensions and height

Applications

The BC3 Batch Controller device is used in applications:

- Dosing of products with pre-selection of the desired quantity, for example in vehicle loading operations
- Automatic dosing when receiving products in multi-component systems, for example in feed production
- Measuring the flow rate and total quantity during loading and unloading, for example picking up or transferring precise quantities of products from and into the silos

Functions

The flow meter allows you to calculate the instant flow rate and the total quantity through a weight/flow sensor positioned inside it, below the product inlet valve.

The electronic unit is capable of dosing desired quantities of product by controlling, via pneumatic controls, the opening and closing of the valve.

Sectors of use

The BC3 Batch Controller device is used in all processes where the dosing of bulk materials is required: rice, cereals, barley, soya, pellets, plastic products etc.





Construction

The BC3 batch controller is composed of a metal containment structure, a product flow opening/closing valve operated on ball bearings, a weight sensor with relative load cell and a multifunction digital indicator.

Models and capacities

The following models are available:

Type	Diameter tubing	Capacity and Bring	Height without flange	Height with flange
BC3.120	120 mm	20 m ³ /h	220 mm	135 mm
BC3.150	150 mm	40 m ³ /h	220 mm	135 mm
BC3.200	200 mm	80 m ³ /h	305 mm	170 mm
BC3.250	250 mm	133 m ³ /h	320mm	170 mm
BC3.300	300 mm	200 m ³ /h	450 mm	240 mm

All models are available in standard or stainless steel versions

Installation

The batch Controller can be supplied with or without attachment flanges. Customized connections can be made on request. Availability of compressed air is required - min. 4 bars

Precision

The BC3 Batch Controller device has a measurement tolerance varying from 0.2 - 1% depending on the homogeneity of the product and the input methods.

Indicators-Connectable instruments

- Separate indicator - Mod. FE710
- Available in panel version for mounting on electrical panel or in table version
- Power supply 24Vdc or 230 Vac
- LED display with multifunction keypad
- Communication interfaces RS232/485, analogue output, Profibus etc.
- Management of 2 units

