



Continuous dosing

Loss-in-weight feeders



Steady and accurate flow rate...

SCAIME offers high accuracy load cells and versatile controllers for differential gravimetric feeders. Easy to integrate into automated systems, these solutions include comprehensive continuous totalization and flow rate control.

LOAD CELLS:

A comprehensive range...

In order to match with each application, SCAIME load cells cover wide measuring ranges, as well as high level of protection and accuracy:

- Single point, bending beam, shear beam or tension load cells
- Capacity from 200 g to 1000 t
- Aluminium or stainless steel
- Many fixing possibilities

F60X

SK30X

R10X

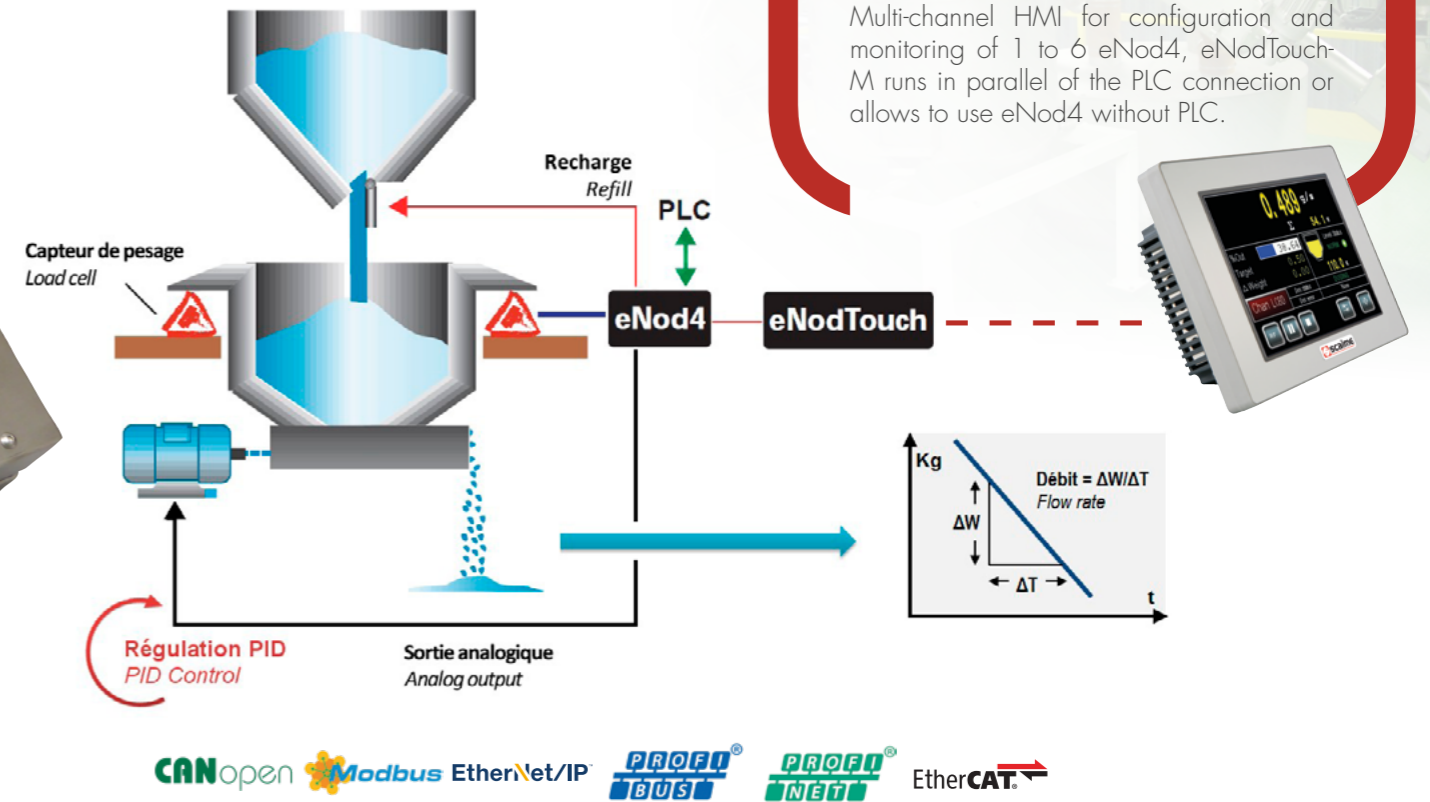
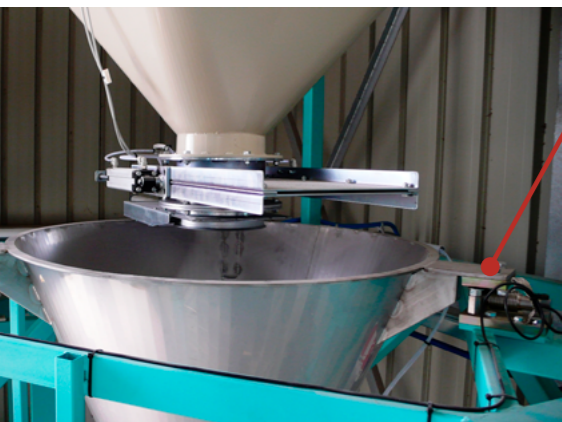
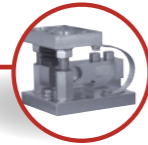


Easy and safe mounting solutions:

Accessories and mounting kits designed by Scaime for hopper and tank weighing ensure optimal functioning of our load cells as well as reliability and operation safety.

- Mounting kits in compression or tension
- Lift-off prevention device
- Overload and side stoppers
- Elastomere pads for vibration damping

STABIFLEX



CANopen Modbus EtherNet/IP PROFIBUS PROFINET EtherCAT

ELECTRONICS:

SCAIME has developed eNod4-F, a powerful and scalable weighing controller, fitted with an application for loss-in-weight gravimetric dosing scales. Designed for an easy integration into automated systems, eNod4-F can also be used without PLC with the optional eNodTouch-M HMI.

eNod4-F offers advanced interfaces and functionalities to build a loss-in-weight gravimetric feeder:

- 4 logic inputs and 4 outputs for dosing process control and pulse signal for remote totalizer
- Several levels of digital filtering to eliminate vibrations
- 1 adjustable analogue output

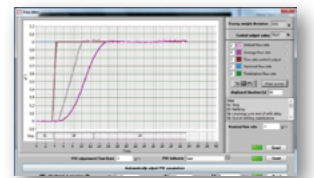
Functions of loss-in-weight feeder:

- Loss-in-weight flow rate calculation
- Totalized weight calculation
- Management of flow rate set point and target total
- Flow rate control according to pre-set target, by PID adjustment
- Automatic adjustment of PID parameters by self-learning technology
- Automatic control of gravimetric dosing phases and refilling phases

SOFTWARE:

eNodView PC software allows configuration and calibration of all products of the eNod range. It is as well a powerful acquisition and signal analysis software for:

- Time and frequency graphic display of the signal
- Simulation and set-up of digital filters
- Graphic display of flow rate and PID control output



Mobile application for Android™:

The eNodApp app allows you to view the data, control, configure, and calibrate all eNod4 equipped with Bluetooth communication option.

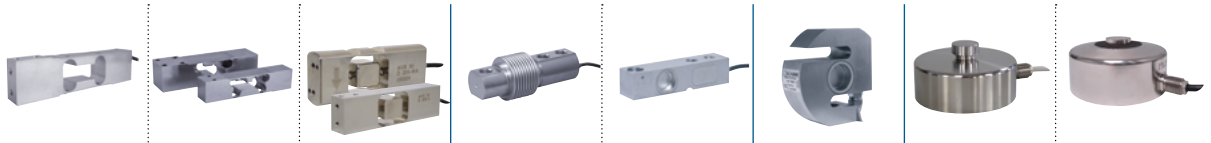


Designed to communicate:

eNod4 controllers offer a full access to process data and configuration through:

- The industrial network link: CANopen®, Modbus-RTU, PROFIBUS-DP, Modbus-TCP, EtherNet/IP, PROFINET® or EtherCAT®.
- A Web server for EtherNet versions
- USB link with eNodView PC software
- Optional touchscreen eNodTouch
- Bluetooth with Android App

LOAD CELLS



Model	AG	AXL - AXH	AVX - AVS	F60X	SK30X	ZA30X	R10X	R30X
Type		Single point		Bending beam		Tension	Compression	
Capacity (C.N.)	1 ... 100 kg	15 ... 500 kg	7.5 ... 125 kg	5 ... 500 kg	300 kg ... 5 t	500 kg ... 7.5 t	250 kg ... 100 t	1 ... 25 t
Accuracy class	C3 / C6	C3	C3 / C6	C3 / C6	C3 / C6	C3	-	C3
Combined error (% C.N.)	0.017 / 0.008	0.017	0.017 / 0.008	0.017	0.017 / 0.008	0.017	0.05	0.017
Construction	Aluminum	Stainless steel	Stainless steel EHEDG version	Stainless steel	Stainless steel	Stainless steel	Stainless steel	Stainless steel
Protection	Coated, IP65	Sealed, IP69K	Sealed, IP69K	Sealed, IP68	Sealed, IP68	Sealed, IP68	Sealed, IP68	Sealed, IP68
Platform (mm)	400 x 400	up to 600 x 600	up to 600 x 400	-	-	-	-	-
Certifications	OIML, NTEP, ATEX, IECEx, FM	OIML, ATEX, IECEx	OIML, ATEX, IECEx	OIML, ATEX, IECEx, FM	OIML, NTEP, ATEX, IECEx, FM	OIML, ATEX, IECEx, FM	ATEX, IECEx	OIML

ELECTRONICS



● : Standard - ○ : Optional

Model	eNod4-F STD	eNod4-F IO+
Type	Controller / Transmitter	
Capacity (C.N.)	1 channel	
Lay out	Din Rail / Stainless steel box	
Accuracy class	0.005 %	
Certification	-	
Internal resolution	24 bits	
Formatted resolution	± 500 000 pts	
Conversion speed	6.25 ... 200 meas./s.	
Interfaces		
Inputs / Outputs	2 I / 4 O	4 I / 4 O
Analog output	-	●
Bluetooth	○	○
Industrial networks / Web server		
Modbus-RTU	● / -	
Modbus-TCP	○ / ○	
CANopen®	● / -	
PROFIBUS-DP	○ / -	
PROFINET®	○ / ○	
EtherNet/IP	○ / ○	
EtherCAT®	○ / ○	



Model	eNodTouch-MS	eNodTouch-ML
Type	IHM	
Capacity (C.N.)	Multi-channel, 1 ... 6 eNod4	
Lay out	Colour touchscreen	
Display	LCD TFT 4.3"	LCD TFT 5.7"
Screen	480 x 272	320 x 240
Communication	RS485, Modbus-RTU	

eNod4 for your processes safety:

Reliability and safety are essential factors to be taken into account for the control of industrial processes.

In order to ensure this functional safety, eNod4 integrates a **diagnosis of the measuring chain**. This diagnosis simulates a load by shunt resistor and can be triggered at any time by the PLC.



Distributed exclusively in Italy by Nonis Balance

TechnositeAltéa-294,Rue Georges Charpak,74100JUVIGNY, France



P.za Elvo Tempia, 12, 13836 Cossato (BI), Italia

info@nonisbilance.com

+39 0159842291

www.nonisbilance.com