



Dynamic Weighing

Grading, Check-weighing

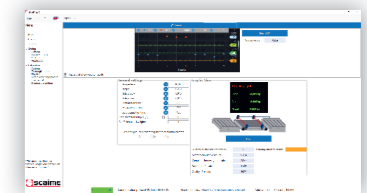
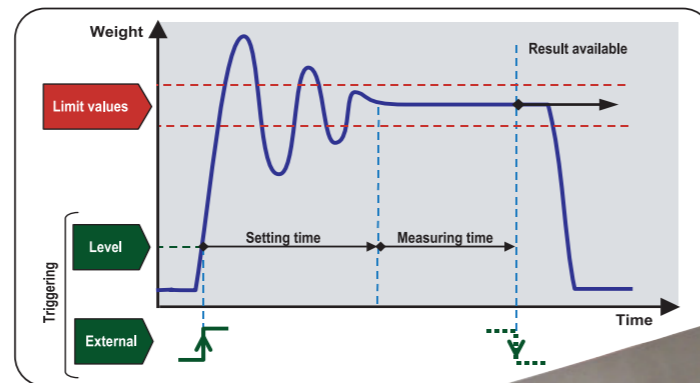


Weighing, controlling at high speed...

SCAIME designs solutions offering speed, accuracy and functions adapted to the specific requirements of dynamic weighing. SCAIME's load cells, electronics and software are a perfect match for checkweighing, and grading applications.

Touchscreen eNodTouch

All eNod4 weighing controllers could be associated with our range of Human-Machine interfaces eNod Touch. These LCD Touchscreens (4"3 to 5"7) allow weight display, system calibration and setting as well as application control.



LOAD CELLS:

SCAIME's wide range of load cells allow customers to solve their specific requirements for dynamic weighing.

High speed digital load cells...

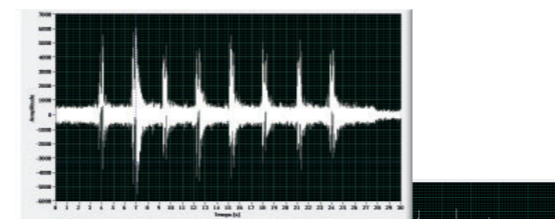
SCAIME have developed a range of high performance digital load cells. Specially designed for dynamic applications in hardest environments.

- Single point load cells
- Capacities from 5 to 75 kg
- Integrated eNod electronics
- Dynamic checkweighing functions
- 2 digital inputs and 4 outputs
- CANopen® and Modbus Communication
- Stainless steel IP69K (DVX/DVS) or aluminum IP65 (AAD)
- Hygienic design, EHEDG compliant (DVS)

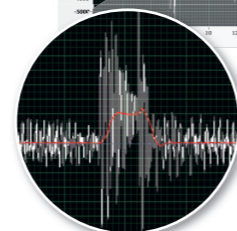
A comprehensive range...

- Single point or bending beam load cells
- Capacities from 1 to 5 000 kg
- Aluminum or stainless steel
- Numerous mounting possibilities

▼ checkweigher signal without filtering



signal filtered with eNod or DVX



ELECTRONICS:

With eNod controllers and digital load cells, SCAIME offers a cost effective and powerful solution for the control of dynamic weighing systems.

Powerful functionalities:

In addition to offering 1000 meas./s. transmission rate with an available resolution of $\pm 500\ 000$ divisions, eNod and DVX/DVS/AAD integrate specific application software dedicated to dynamic checkweighing:

- It takes care of complete signal processing by calculating automatically weight values.
- It controls by itself the complete weight acquisition process, also taking in consideration external detectors signals.
- It includes powerful digital filters dedicated to vibration noise cancellation.

Designed for communication:

eNod controllers and DVX/DVS/AAD digital load cell are designed to easily be connected to all kinds of PLC's with RS485, RS232 and CANbus, using MODbus-RTU, CANopen®, PROFIBUS-DP, EtherNet/IP, Modbus-TCP, PROFINET® and EtherCAT® protocols.

PC SOFTWARE:

eNodView is the software for DVX/DVS/AAD or eNod's calibration and programming. It is also a powerful tool for signal acquisition and analysis, allowing:

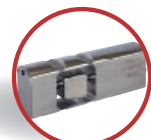
- Graphic visualization of the signal in frequency and time
- Simulation and programming of integrated digital filters

Application for Android™:

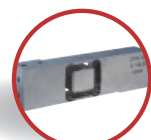
The eNodApp app allows you to view the data, control, configure, and calibrate all eNod4 equipped with Bluetooth communication option.



DVS



DVX



AAD



AG



F60X



AVX



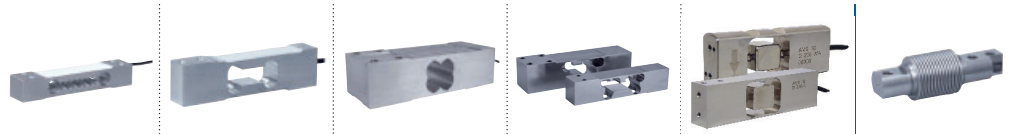
AQ



AXL

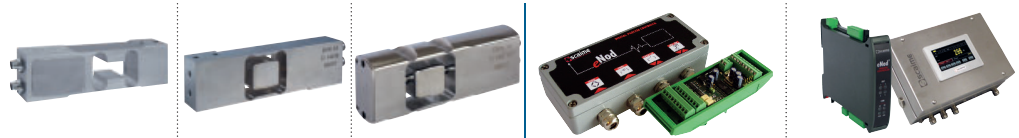


LOAD CELLS



Model	AQ	AG	AP	AXL - AXH	AVX - AVS	F60X
Type	Single point					Bending
Rated load capacity (Cn)	5 kg ... 35 kg	2.5 kg ... 100 kg	75 kg ... 635 kg	10 kg ... 500 kg	15 kg ... 125 kg	5 kg ... 500 kg
Accuracy class	C3 / C4	C3 / C6	C3	C3	C3 / C6	C3 / C6
Combined error (% Cn)	0.017 / 0.013	0.017 / 0.008	0.017	0.017	0.017 / 0.008	0.017 / 0.008
Construction	Aluminum	Aluminum	Aluminum	Stainless steel	Stainless steel	Stainless steel
Protection	Coated, IP65	Coated, IP65	Coated, IP65	Sealed, IP68	Sealed, IP69K EHEDG	Sealed, IP68
Admissible platform size (mm)	350 x 350	400 x 400	up to 700 x 700	up to 600 x 600	up to 600 x 400	-
Certifications	OIML, NTEP, ATEX, IECEx	OIML, NTEP, ATEX, IECEx, FM	OIML, ATEX, IECEx	OIML, ATEX, IECEx	OIML, ATEX, IECEx	OIML, ATEX, IECEx, FM

ELECTRONICS



● : Standard - ○ : Optional

Model	AAAD	DVX	DVS	eNod3 -Din / -Box	eNod4 -Din / -Box
Type	Digital Load Cells			Controller / Transmitter	
Rated load capacity (Cn)	5 kg ... 75 kg	7.5 kg ... 75 kg	15 kg ... 75 kg	-	-
Accuracy class	OIML 3 000 d	OIML 3 000 d	OIML 3 000 d	0.005 % / OIML 6 000 d	OIML 6 000 d
Internal resolution	24 bits	24 bits	24 bits	24 bits	24 bits
Calibrated resolution	500 000 pts	500 000 pts	500 000 pts	±500 000 pts	±500 000 pts
Max. measuring speed	6.25 ... 1600 meas./s.	6.25 ... 1600 meas./s.	6.25 ... 1600 meas./s.	6.25 ... 1600 meas./s.	6.25 ... 1600 meas./s.
Logic Input (I) / Output (O)	● / ● 2 I / 4 O	● / ● 2 I / 4 O	● / ● 2 I / 4 O	● / ● 2 I / 4 O	○ / ● 4 I / 4 O
Analog output	-	-	-	-	○
Bluetooth	-	-	-	-	○
Communication	RS485, CANbus	RS485, CANbus	RS485, CANbus	RS232, RS485, CANbus	USB, RS485, CANbus, EtherNet
Construction	Aluminum	Stainless steel	Stainless steel	Rail DIN support / Aluminum box	Rail Din support / Stainless steel Housing
Protocols	Modbus CANopen®	Modbus CANopen®	Modbus CANopen®	Modbus CANopen®	Modbus, PROFIBUS-DP, CANopen®, EtherNet/IP, PROFINET®, EtherCAT®
Protections	IP65	Sealed, IP69K	IP69K EHEDG	- / IP67	- / IP65
Display	-	-	-	-	○ 4"3 - 5"7