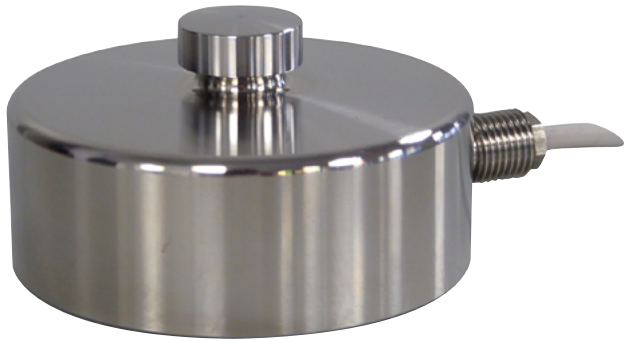


# R10X

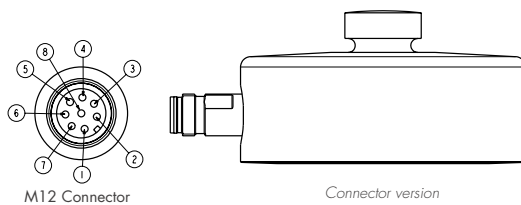
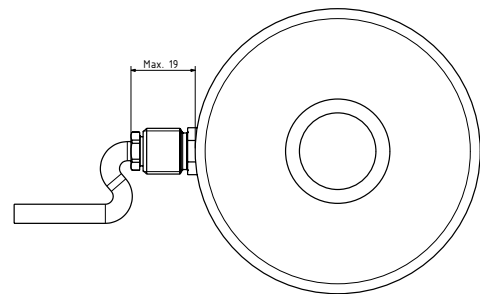
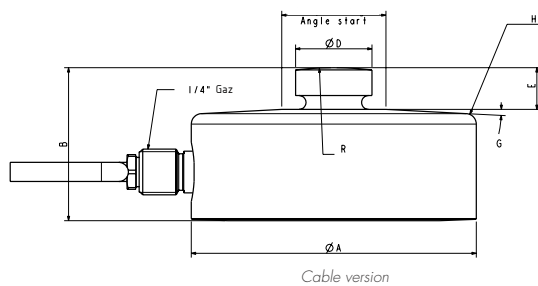
## 250 kg ... 100 t



- Made of stainless steel, sealed IP68
- Accuracy up to  $\pm 0.05\%$
- Spherical load button
- Ideally suited for tank or silo weighing applications
- Easy to clean
- High temperature version (HT :  $+125^{\circ}\text{C}$ ) on request
- Optional connector output



\* In option, only for cable version



Rated capacity (C.N.)	Dimension [mm]												Weight
	Ø A	B	Ø D	E	R	F	G	H	Ø I	Ø L	M	N	
250 kg ... 15 t	82	44	22	12	90	30	3°	3	82	23	15	3	1.5 kg
30 t	126	54	35	14	160	55	3°	3	89	36	15	3	4 kg
50 t S-Size	126	54	35	14	160	55	3°	3	89	36	25	3	4 kg
50, 100 t	164	80	60	20	340	/	0°	0	89	62	25	4	10 kg

All dimensions in mm. Dimensions and specifications do not constitute any liability whatsoever. Technical drawings are available on request.

#### Wiring

+ excit.	+ signal	- signal	- alim.
red	green	white	black

#### Wiring connector version

+ excit.	+ signal	- signal	- excit.	+ sense	- sense
7	1	8	6	3	5



# R10X

250 kg ... 100 t

## Specifications

METROLOGICAL				
Rated capacity (Cn)	0.25	0.5	1, 2.5, 5, 10	15, 30, 50, 100 t
Combined error	±0.2	±0.1	±0.05	±0.1 %Cn
Repeatability				±0.03 %Cn
Temperature effect on sensitivity				±0.005 %Cn/°C
Temperature effect on zero				±0.005 %Cn/°C
Creep error (30 min.)				±0.03 %Cn
Zero balance				±2.5 %Cn
ELECTRICAL				
Nominal range of excitation voltage				1 ... 15 V
Rated output at Cn				2 ±0.15 % mV/V
Input/output resistance				730 ±50 / 700 ±10 Ω
Insulation resistance				> 2 000 MΩ/50V
GENERAL				
Compensated temperature range				-10 ... +50 °C
Service temperature range				-20 ... +60 (HT : -40 ... +125)* °C
Safe load limit				0 ... 10 t : 200 / 15 t ... 100 t : 150 %Cn
Ultimate overload				0 ... 10 t : 400 / 15 t ... 100 t : 300 %Cn
Protection class				IP68 EN 60529
Material				
Measuring body				Stainless Steel
Cable gland				Stainless Steel
Cable sheath				PVC (HT : Teflon PFA)
Cable length				10 m
Net weight				See on the front kg

\* HT : High temperature version

## Options

ATEX 2014/34/EU, IECEx  
Only for cable version

⊕ II 1 G/D, Ex ia IIC T6 Ga, Ex ia IIIC T80°C Da, IP6X, -20°C < Ta < +60°C (zone 0/20)

⊕ II 1 D, Ex ta IIIC T125°C Da, IP6X, -20°C < Ta < +60°C (zone 20)

⊕ II 3 G, Ex nA IIC T6 Gc, -20°C < Ta < +60°C (zone 2)

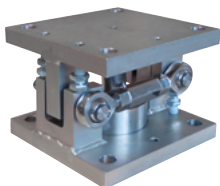
Connector output

M12 - 8 pts

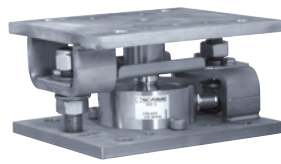
## Accessories

Connection cables

M12 - 8pts, 2/5 m



SILOSAFE-R mounting kit




SILOKIT-R mounting kit



Plates mounting kit


 **scaimé**


Distributed exclusively in Italy by Nonis Balance


 TechnositeAltéa-294,Rue Georges  
Charpak,74100JUVIGNY, France


**NONIS**  
Impianti di pesatura industriali



 P.za Elvo Tempia, 12,  
13836 Cossato (BI), Italia

 info@nonisbalance.com

 +39 0159842291

 www.nonisbalance.com