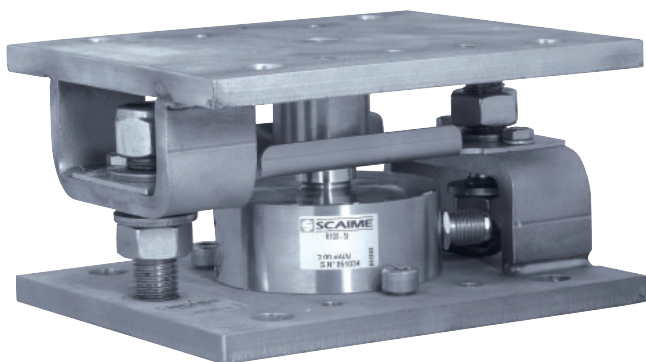




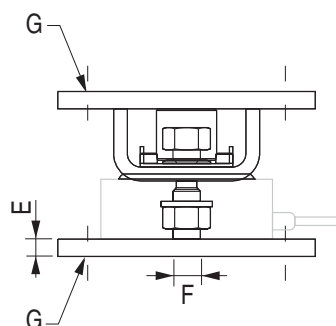
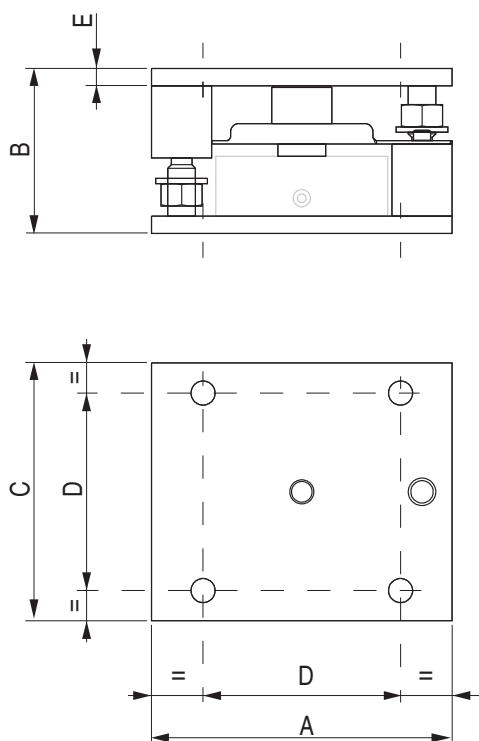
SILOKIT-RX

250 kg ... 30 t



Load cell sold separately

- Designed for tank or silo weighing
- Made of stainless steel
- Lift-off prevention device included
- Prevention against lateral forces
- Compact design and easy installation



R10X Load cell	Dimension [mm]							Weight [kg]
	A	B	C	D	E	F	G (x8)	
250 kg ... 15 t	175	96	150	115	10	M16	Ø14	6
30 t	230	118	200	160	10	M20	Ø17	10

R10X Load cell	SILOKIT-RX	
	250 kg ... 15 t	30 t
Maximum horizontal force [kN]	10	20
Maximum lift-off force [kN]	30	50

All dimensions in mm. Dimensions and specifications do not constitute any liability whatsoever. Technical drawings are available on request.



Distributed exclusively in Italy by Nonis Balance

TechnositeAltéa-294,Rue Georges
Charpak,74100JUVIGNY, France



P.za Elvo Tempia, 12,
13836 Cossato (BI), Italia

info@nonisbalance.com

+39 0159842291

www.nonisbalance.com