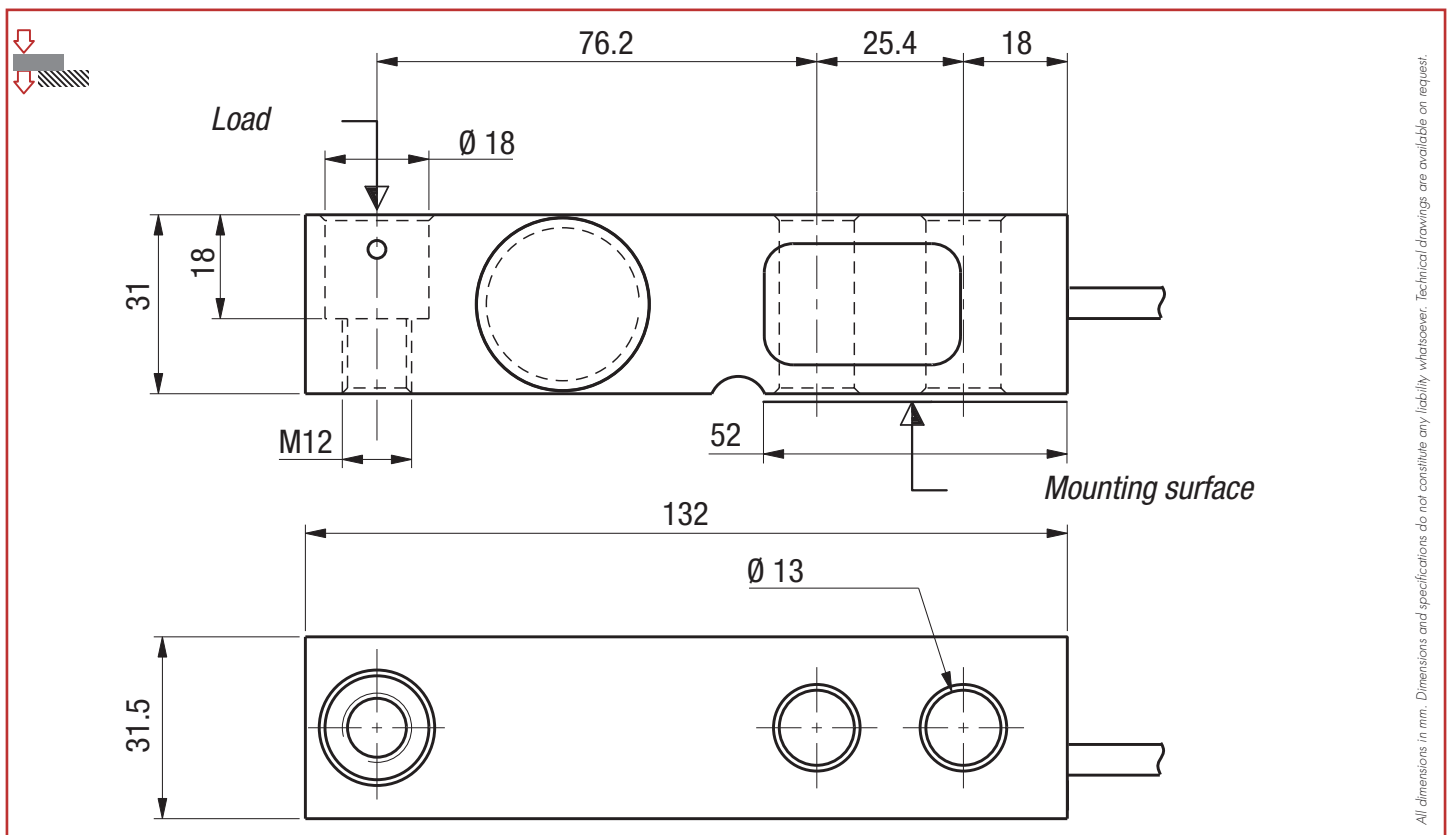


SK30A 2T

500 kg ... 2 t



- Stainless steel construction, IP67 protection
- 3 000 d OIML R60 approved
- Current calibrated signal output for multi-load cells mounting
- Ideally suited for platform scales



Wiring

+ excit.	+ signal	- signal	- excit.	+ sense	- sense
brown	yellow	white	green	grey	pink



SK30A

500 kg ... 2 t

Specifications

METROLOGICAL		C3 10e
Rated capacity (Cn)	500, 1 000, 2 000	kg
Combined error	±0.017	%Cn
Temperature effect on zero	±0.0014	%Cn/°C
Temperature effect on sensitivity	±0.0014	%Cn/°C
Creep error (30 min.)	±0.024	%Cn
LEGAL METROLOGY OIML R60		
Accuracy class		C3
Maximum capacity (Emax)	500, 1 000, 2 000	kg
Max. number of LC intervals (nmax)		3 000 d OIML
Minimum verification interval (vmin)		Emax/10 000 kg
Z=Emax/(2xDR)		3 000
ELECTRICAL		
Nominal range of excitation voltage		1 ... 15 V
Rated output at Cn		2 mV/V
Current adjustment		±0.1 %Cn
Zero balance		±2.5 %Cn
Input/output resistance		385 ±20 / 350 ±5 Ω
Insulation resistance		5 000 MΩ/50V
GENERAL		
Compensated temperature range		-10 ... +40 °C
Service temperature range		-20 ... +60 °C
Safe load limit		150 %Emax
Ultimate overload		200 %Emax
Tightening torque		30 Nm
Protection class		IP67 EN 60529
Material		
Measuring body		Stainless steel
Cable sheath		PVC
Cable length		5 m
Net weight		940 g

Options

ATEX 2014/34/EU, IECEx

Ⓢ II 1 G/D, Ex ia IIC T6 Ga, Ex ia IIIC T80°C Da, IP6X, -20°C < Ta < +60°C (zone 0/20)

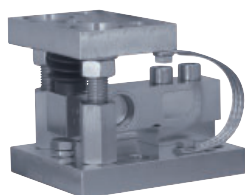
Ⓢ II 1 D, Ex ta IIIC T125°C Da, IP6X, -20°C < Ta < +60°C (zone 20)

Ⓢ II 3 G, Ex nA IIC T6 Gc, -20°C < Ta < +60°C (zone 2)

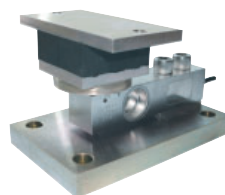
Accessories



LFA




STABIFLEX SK



ISOFLEX


 **scaimé**


Distributed exclusively in Italy by Nonis Balance


 TechnositeAltéa-294,Rue Georges
Charpak,74100JUVIGNY, France


NONIS
Impianti di pesatura industriali



 P.za Elvo Tempia, 12,
13836 Cossato (BI), Italia

 info@nonisbalance.com

 +39 0159842291

 www.nonisbalance.com