

# XT50 Extensometer



## Product description

The XT50 is a fully welded, stainless steel bolt-on extensometer characterised by having a very low activation force – ideal for measuring force in particularly stiff structures. It gives an output signal proportional to the elastic deformation of the structural part upon which it is mounted. No structural adhesive is required during installation.

## Applications

Load and stress monitoring in structural parts, overload sensing and stability control on mobile and stationary construction and agricultural equipment.

## Key features

Stainless steel construction

High resolution

Low activation force

Easy bolt installation, no adhesives required

Shielded cable

## Options

mV/V output

± 10V output

CAN or CANopen outputs

## Accessories

Compatible on-board load moment indication electronics



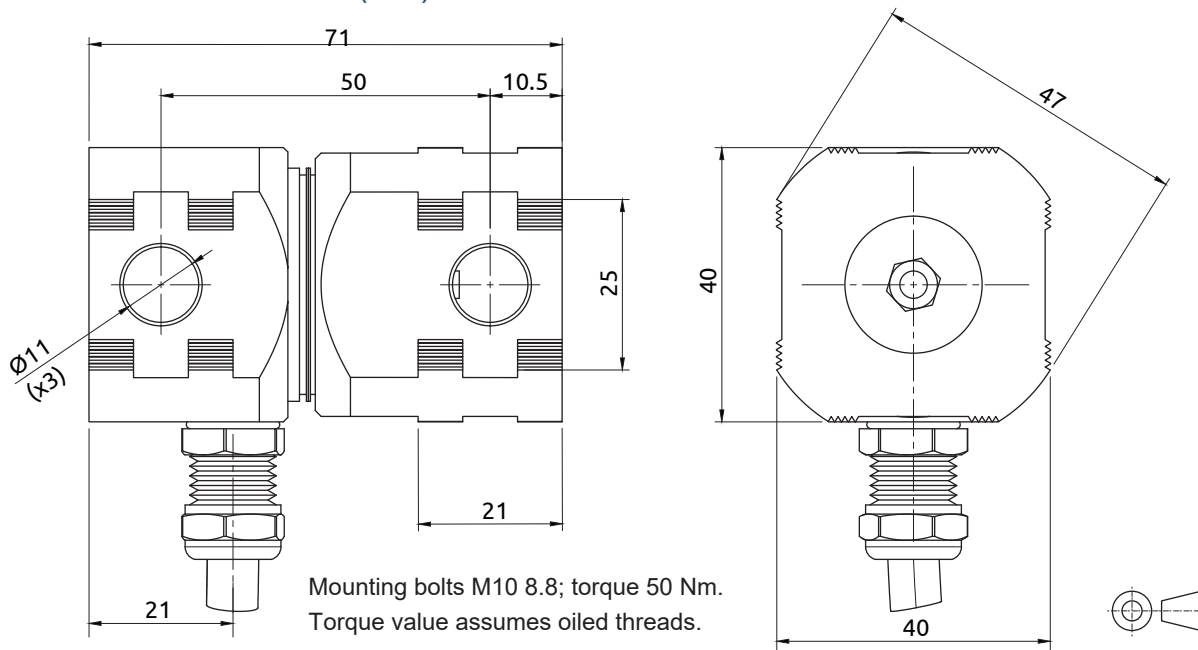
RoHS  
compliant



## Specifications

Rated Output (RO)	mV/V	1.2 ± 10 % at strain of 500 µm/m
Zero Balance	%*RO	≤ ± 5
Supply voltage	V	5...10
Input Impedance	Ω	1,100 ± 50
Output Impedance	Ω	1,000 ± 2
Insulation resistance (100 V DC)	M Ω	≥ 5,000
Operating temperature range	°C	-30.....+70
Compensated temperature range	°C	-10.....+40
Sensor material	-	Stainless steel 17-4 PH (1.4548)
Sealing	-	complete hermetic sealing
Protection according EN 60 529	-	IP68 (up to 2 m water depth)

## Product dimensions (mm)



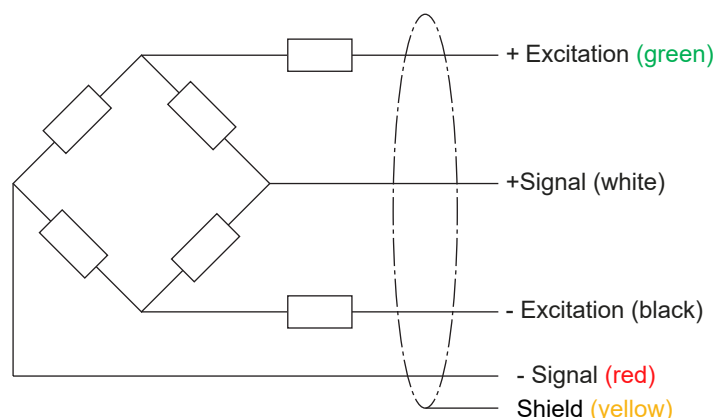
## Wiring for XT50

The extensometer is provided with a shielded (floating), 4-conductor cable (AWG 24).

Standard cable jacket: PVC

Standard cable length: 3m

Standard cable diameter: 5.5mm



Specifications and dimensions are subject to change without notice.